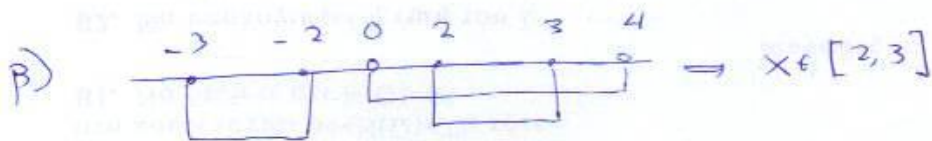
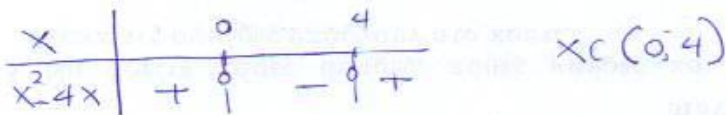


2255

$$\alpha) \begin{cases} |x| \geq 2 \\ |x| \leq 3 \end{cases} \Leftrightarrow \begin{cases} x \geq 2 \vee x \leq -2 \\ -3 \leq x \leq 3 \end{cases}$$

$$x \in [-3, -2] \cup [2, 3]$$



$$\gamma) 2 \leq p_1 \leq 3$$

$$2 \leq p_2 \leq 3$$

$$4 \leq p_1 + p_2 \leq 6 \Leftrightarrow 2 \leq \frac{p_1 + p_2}{2} \leq 3$$