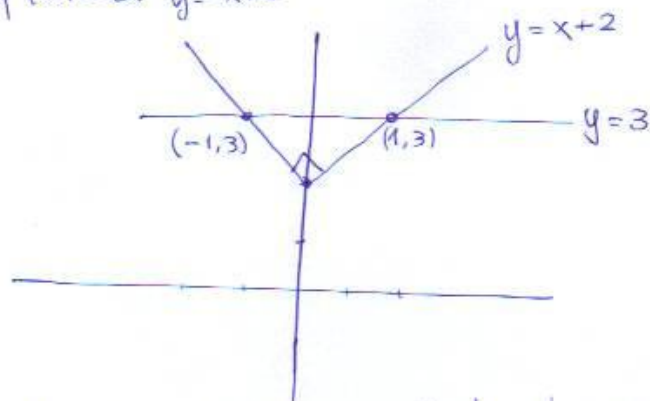


4657

a) $f(x) = 2$ $y = -x + 2$

β)



$(-1, 3)$, $(1, 3)$ si sunt suficiente ca sa ne ajute sa gasim y

b) Pentru $\alpha > 2$

i) $x + 2 = \alpha \Rightarrow x = \alpha - 2 \rightarrow (\alpha - 2, \alpha)$

$-x + 2 = \alpha \Rightarrow x = 2 - \alpha \rightarrow (2 - \alpha, \alpha)$