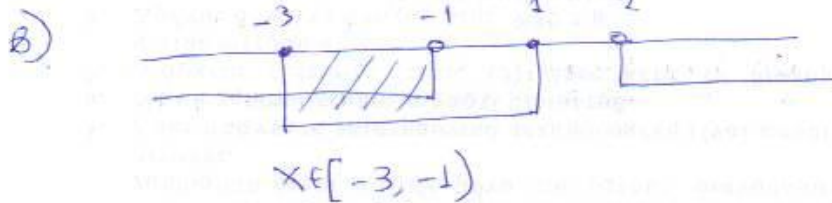
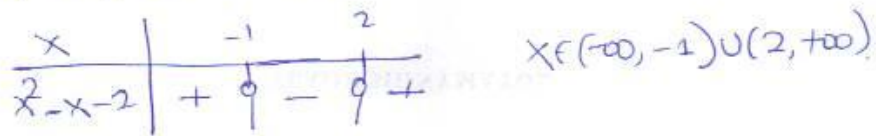


2273

a) $|x+1| \leq 2 \Leftrightarrow -2 \leq x+1 \leq 2 \Leftrightarrow -3 \leq x \leq 1$



d) $-3 \leq p_1 < -1$

$-3 \leq p_2 < -1 \Leftrightarrow 3 \geq -p_2 > +1 \Leftrightarrow 1 < -p_2 \leq 3$

$-2 < p_1 - p_2 < 2$

} \Rightarrow